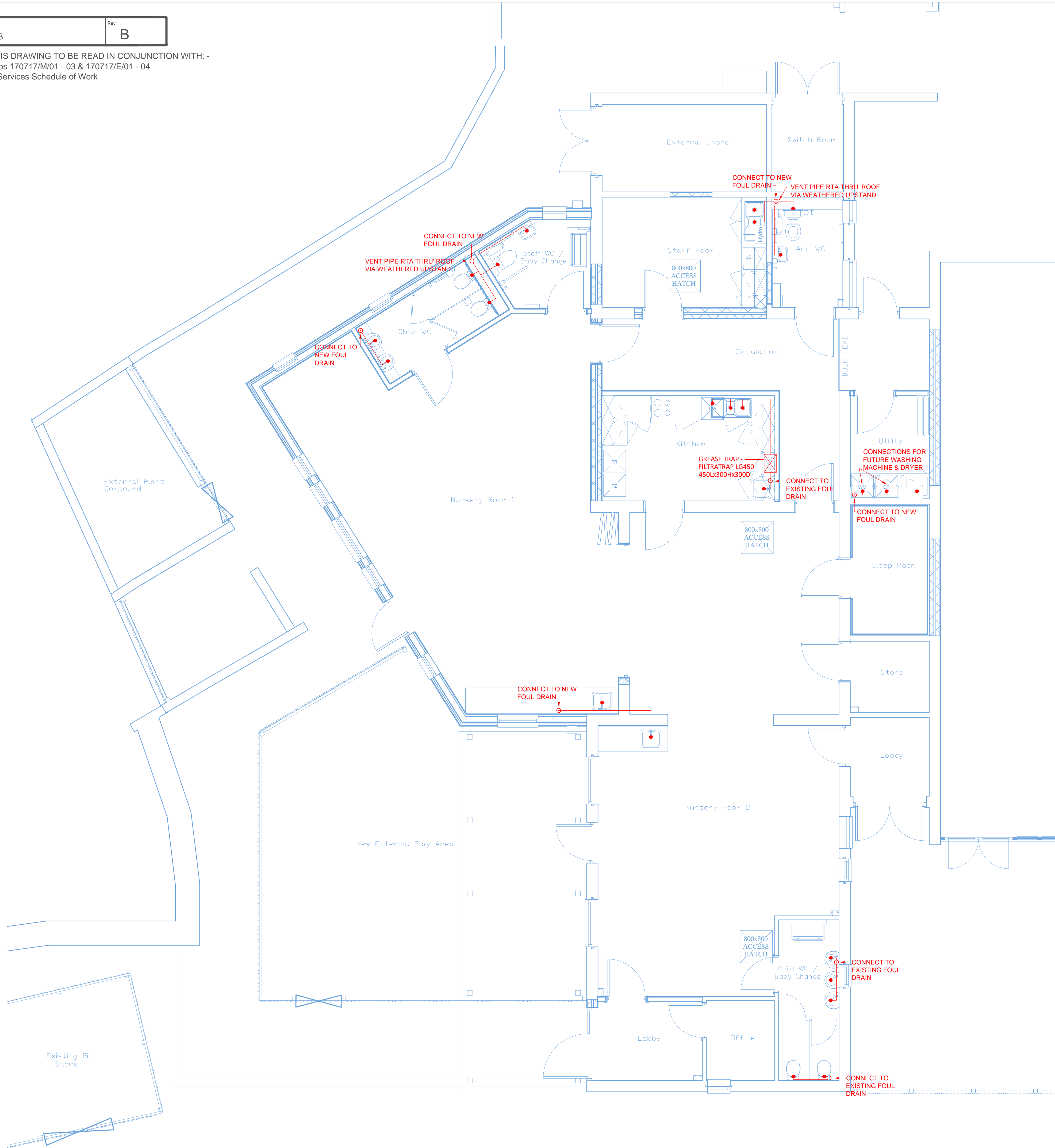


NOTE - THIS DRAWING TO BE READ IN CONJUNCTION WITH: -


- Drg Nos 170717/M/01 - 03 & 170717/E/01 - 04
- M&E Services Schedule of Work



REVISIONS

(A)	20/10/17	TENDER
(B)	31/10/17	ARCHITECTS COMMENTS INC.

# TENDER

PROJECT : REFURBISHMENT OF CARN GWAVEL PRIMARY SCHOOL ISLES OF SCILLY			
CLIENT : COUNCIL for THE ISLES of SCILLY			
DRAWING TITLE : Mechanical & Electrical Services Above Ground Foul / Waste / Vent Pipework			
<div> <b>SJH Design Services Ltd</b> Pentidna Barn, Prosper Hill Gwithian, Hayle, TR27 5EB Tel: 01736 757624 / Email: Stephen@sjhdesign.biz</div>			
Date	17/07/17	Designed by	SJH
Scale	1:50 / AS SHOWN	Approved by	SJH
Drawing No. : 170717/M/03			Rev B